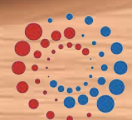


IS-6000c

The new choice in high volume mailing

Franking machines



Digital Mailing Solutions

# Ergonomically engineered for maximum productivity and output

## Your new choice in high volume solutions

The IS-6000c sets a new standard for mailing system productivity, operability and efficiency.

The IS-6000c delivers simple ergonomic operations; investment protection and cost savings; reliable production and maximum uptime.

## The new choice that delivers reliable production and maximum uptime

Let's face it. Business today isn't what it was yesterday. Meeting the demands of your mail processing centre can be tough. Whether you are adhering to time critical deadlines or changes in your daily routine, the bottom line is the work must get done. You need a durable and reliable workhorse that is going to deliver. With an overall weight of nearly 95Kgs and tested to 30 million cycles, the IS-6000c is always ready for the challenge. Combining best in class ergonomics with a finely engineered machine, the IS-6000c has what it takes to maximize throughput including:

- **High Capacity Envelope Feeder (1)** with reload on the fly capability. With a stacking capacity of more than 180mm, and the ability to add additional items as the machine is running, operators will decrease the number of machine starts and stops, leading to increased productivity.
- **Mixed Mail Feeding (2)** saves time preparing your mail for processing. No more manual sorting, the IS-6000c can handle varying size items up to 20mm thickness. Postcards are also handled with ease.
- **Dynamic Scale (3)** with patented four-point detection system that rapidly weighs and measures mail in-line, automatically categorising and rating it in compliance with Royal Mail regulations.
- **Superior sealing** capabilities for both open and closed flap envelopes.
- **A power conveyor stacker (4)** that has a storage capacity ratio in synch with the feeder to drive maximum system performance.



## The new choice that provides investment protection and cost savings

In today's economic environment, watching the bottom-line has never been more important, that is why each IS-6000c is built to meet the specific needs of your business. The advanced modular design allows you to configure a system where you only purchase the components, apps, and options that you need, eliminating overspending.

- New ink and printing technology provides maximum return on your investment. Say good-bye to the additional consumable cost of print heads. Each IS-6000c comes standard with a permanent print head designed to last the life of the mailing system.



### 1. Weighing platforms

- Weigh oversized mail pieces, media, and parcels
- 3,5,10 or 30 kg capacity available

### 2. Mixed mail feeder

- Eliminate hand sorting by size or weight
- Processes common envelopes (nested and non-nested) and postcards with ease

### 3. Full Keyboard

- The added comfort of a full keyboard makes set up and mail processing a breeze

### 4. Ergonomic workstation

- Designed especially for the IS-6000c, this ergonomic workstation creates a comfortable workspace
- Adjustable shelving is great for holding supplies
- Dual locking doors provide additional storage and security

### 5. Dynamic scale

- Automatically categorises mail based on shape and weight
- Accurately rates mail at speeds up to 140 letters per minute
- Royal Mail 'Price in Proportion' compliant



## The new choice for managing mailing operations and controlling costs



### 6. Power Conveyor Stacker

- Provides consistent feeding and stacking capacity
- Decreases work-steps to achieve maximum throughput

### 7. 15" colour touch screen

- Adjustable screen position provides maximum comfort for all operators
- Large descriptive prompts and buttons make navigation simple

## The new generation that helps you take control of postage expenses

**Low Ink Alert App** keeps you informed when replacements are required, maximising up-time.

**myneopost App** a suite of business services to help with your day to day operations.

With a **NeoStats** subscription within **myneopost**, you can view on-line your postal spend by tariff, department or date giving you detailed reports to manage expenditure.

**Remote Diagnostics App** provides connectivity to powerful and integrated software solutions for postal management. It brings the power of the internet to your mail operation, with access to unlimited information.

## The new generation that helps you manage postage funding & postage rates

**neoFunds® App** adds additional convenience and flexibility with download now, pay later postage. Eliminates out of funds problems and improves cash flow.

**Royal Mail Rates App** provides rapid delivery of updates when the Royal Mail announces changes in rates, delivery service fees and postal zones.

**PC Link App** provides connectivity to powerful and integrated software solutions for postal management. It brings the power of the internet to your mail operation, with access to unlimited information at your fingertips.

## The new generation that helps you take control of postage expenses

**Basic reporting App** provides connectivity to powerful software solutions for postal expense management.

**Advanced reporting App** provides postage usage trends by department, time period and postal class. Reports can be viewed as graphical snapshots and all data can be exported to Excel for additional analysis.

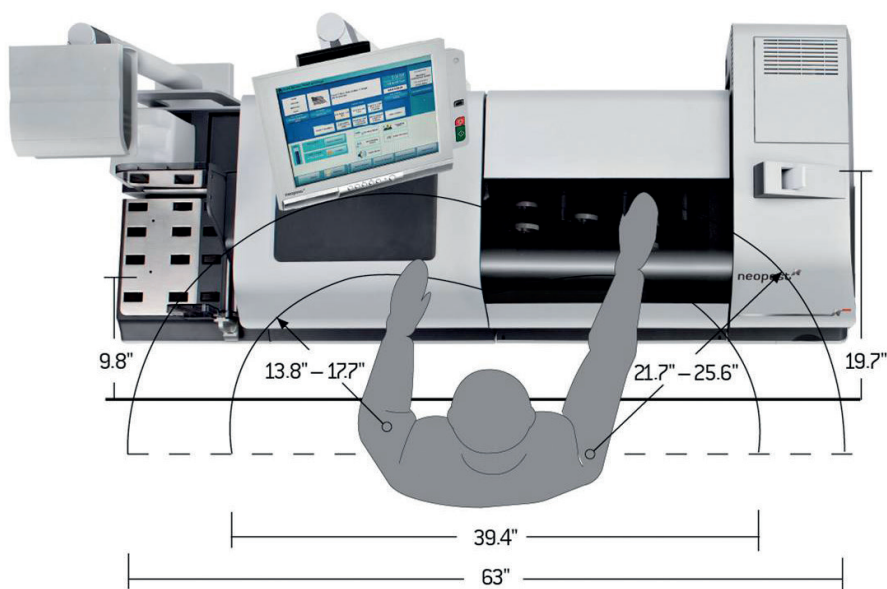
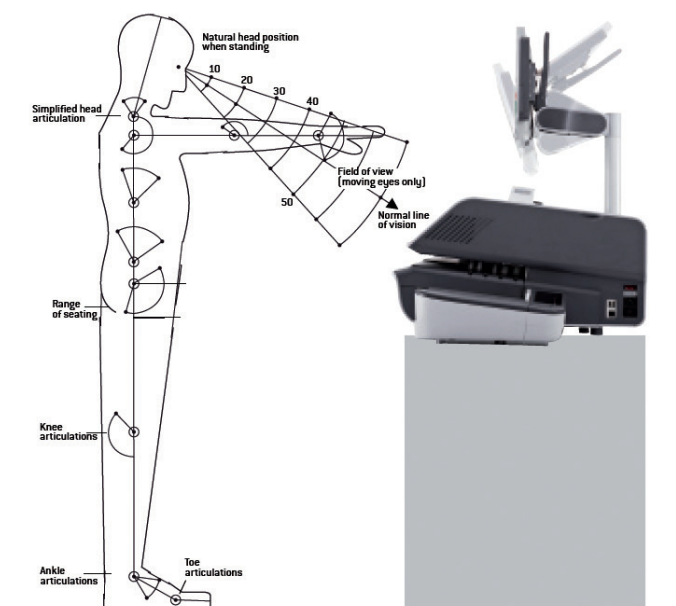
**MAS App** delivers reports that track, analyse, allocate, forecast, and consolidate mail processing activity.

- Automatic alerts and budget limits help you monitor costs to prevent overspending
- Views and reporting can be done for a single location or an integrated multi-site enterprise

## The new choice that offers simple, ergonomic operations

The IS-6000c was designed with the operator in mind. At a first glance, you will notice all mailing operations are controlled from the same area, creating the ideal ergonomic workspace. The modular and flexible design of this system allows operator's to adjust and place components within an arm's reach, minimizing the range of motion, providing optimal work-flow and comfort.

- The height adjustable 15" touch screen moves backwards and forwards, swivels left and right, and moves up and down, providing a comfortable working environment for all of the operators using this system.
- All screens display large descriptive buttons and prompts, making navigation a breeze. Cool shades of blue minimise eye strain and fatigue. Operators can create rate shortcuts, rate favourites, and customised menu keys, all on the home screen, which help increase operational efficiency.
- The added comfort of a full keyboard will help improve usage of account and departmental set ups.
- A dedicated workspace under the screen provides an additional area for sorting and preparing mail.



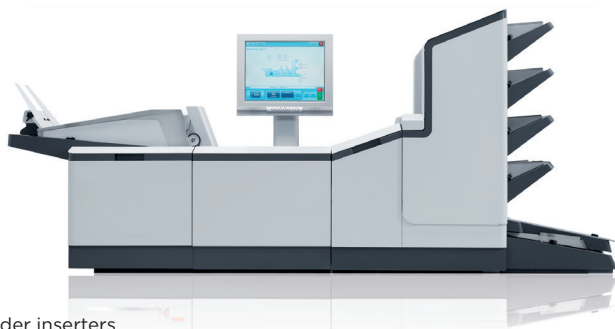
## DMS mailroom solutions



Automatic letter openers



Address printers



Folder inserters

*images for illustrative purposes only*

## Why choose DMS?

DMS is a leading provider in mailing solutions, shipping services and digital communications. We believe that people are the key to business success. That's why our products and services are tailored to help your organisation improve the quality of its interactions and bring people closer together.

We can assist with design, production and distribution of transactional and marketing mail. And when customers respond we make it simple to process, track and store documents and emails. Our team of expert Account Managers will tailor solutions to meet your needs. An extensive support network of field engineers, contact centre and on-line tools are available to ensure our solutions keep delivering.

Find out more at  
[digitalmailingsolutions.co.uk](http://digitalmailingsolutions.co.uk)

## Specifications

### Operational efficiency

Speed (batch processing)	Up to 260 LPM
Dynamic Weighing Speed	Up to 140 LPM
Large 15" Control Panel	Colour Touch Screen
Maximum Envelope Thickness	20mm
Label Dispenser	Automatic
Preset jobs	15
Connection type	LAN, WiFi

### Mail quality and security

Advertising Slogans	8 standard
Mail Class Automatically Printed	Yes
Incoming Mail Date Stamp	Yes
Adjustable Water Flow for Sealer	Yes

### Budget optimisation

Account reporting and control	up to 500 depts
neoFunds®	Yes
Mail Accounting Software (9999 depts)	Option
Permanent Print Head	Yes
Ultra High Capacity Ink Tank	Yes

### Online Management

Postal Rate Change Downloads	Yes
Low Ink E-mail Alerts	Yes
View Postage Usage Online (£, pieces)	Yes
Advanced Reporting	Yes

### System dimensions (length x depth x height)

Mailing system with catch tray	150 x 64 x 36
Mailing system with dynamic scale and catch tray	198 x 64 x 36
Power conveyor stacker	102 x 36 x 30
Adjustable control panel height	84 cm

### Peripherals

Dynamic Scale	Optional
Weighing Platforms	3, 5, 10, 30kg
Differential Weighing	Optional
Barcode Scanner	Optional
USB Mass Storage	Optional
External USB Report Printer	Optional



Digital Mailing Solutions

Digital Mailing Solutions Limited  
 Kemp House,  
 152-160 City Road  
 London  
 EC1V 2NX  
 T: 020 3915 3913  
 E: [info@digitalmailingsolutions.co.uk](mailto:info@digitalmailingsolutions.co.uk)  
[www.digitalmailingsolutions.co.uk](http://www.digitalmailingsolutions.co.uk)